

♩=155  
**ROCK**

# Mizmor Shir

Eli Gerstner  
As Performed By The Y.B.C.

**INTRO**

(N.C.)

**A**

Cmi      Ab      Eb      Bb

Gmi      1. Bb      Ab      Bb      Cmi

2. Bb      Ab      Bb      Cmi

**B**

Cmi      Ab      Eb      Bb      Cmi

Ab      Bb      Gmi      Cmi      Ab

Eb      Bb      Ab      1. Eb      Bbsus4

Bb      2. Fmi      Bbsus4      Bb



♩=70

**BALLAD**

# Daddy Come Home

Eli Gerstner

As Performed By The Y.B.C.

**Intro**

Ami

F

C

G

Ami



F

C

G

Ami



C

G

Ami

F

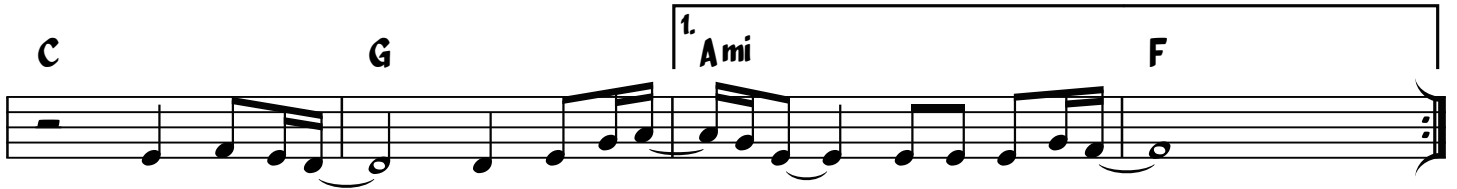


C

G

1. Ami

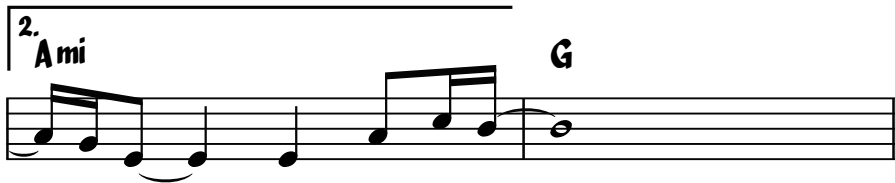
F



2.

Ami

G



Ami

F

C

G



Ami

F

C

G

Ami



♩=116

**DANCE**

# Y'vonim

Eli Gerstner

As Performed By The Y.B.C.

**INTRO**

Bbmi

Ab

Gb

Db

Ab

1. Ab

2. Ab

Bbmi

Ab/Bb

Gb/Bb

Eb/Bb

**Vox.**

**A**

Bbmi

Ab

Gb

Ebmi

Ab

Bbmi

**B**

Ab

Bbmi

Ab

Bbmi

Fmi

Ab

Bbmi

Ab

Bbmi

Ab

Bbmi Db

Ab/c

Bbmi

Ab

Ab

Bbmi

Ab

Bbmi

Fmi

Ab

Bbmi

Ab

Bbmi

Db

Eb

Fmi

1. Ab

Bbmi

2.

Ab

Bbmi



♩=124

**BALLAD**

# Chasoif

Yossi Newman

As Performed By Y.B.C.

**INTRO**

B $\flat$  F E $\flat$  F Gmi F

E $\flat$  Gmi F | 1. E $\flat$ add9 B $\flat$  Fsus<sup>4</sup> F/A

2. E $\flat$  E $\flat$ mi B $\flat$  F B $\flat$

B $\flat$  F B $\flat$  B $\flat$  F E $\flat$  Gmi Dmi

**A**

E $\flat$  | 1. Cmi E $\flat$  Fsus<sup>4</sup> F | 2. B $\flat$  E $\flat$  Fsus<sup>4</sup> F

B $\flat$  F E $\flat$  Gmi F E $\flat$

**B**

1. B $\flat$  F E $\flat$  Cmi<sup>7</sup> E $\flat$  Fsus<sup>4</sup> F/A

2. B $\flat$  F E $\flat$  E $\flat$ mi B $\flat$  E $\flat$  F B $\flat$



♩=160

**ROCK**

# Al Hanisim

Eli Gerstner  
As Performed By The Y.B.C.

**INTRO**

Gmi

D

1. Bb F C

2. Eb F C C

**A** Gmi C Eb Cmi Bb/D Eb D7

Gmi C/G Eb F Gmi

**B** Gmi Dmi7 Eb C/E F

Bb F/A Eb/G F/A Bb Cmi Dmi 1. Eb Bb F/A

2. Eb Bb F/A Cmi Dmi F Gmi



# Those Were The Nights

Eli Gerstner

As Performed By Y.B.C.

♩=172

### Intro

Chords: E5, C, D, E5, C, D, E5, C, G, A5, B5

### SWING EIGHTHS

Chords: Emi, Bmi, D, Emi, Ami, Emi, D, B, Emi, Bmi, D, Emi, Ami, B, B

**A**



**STRAIGHT EIGHTHS**

**B**

C D G Bmi/F# Emi Emi/D

C D G B

Ami<sup>7</sup> D B<sup>7</sup> C

1. Ami Ami/G F#mi<sup>7</sup>(b5) Bsus<sup>4</sup> B

2. Ami<sup>7</sup> D C D Emi To **A**

**ON CUE ONLY**

**C**

Ami D G Emi

C D G E

Ami Dsus<sup>4</sup> D G Bmi/F# Emi Emi<sup>7</sup>/D

C D Bsus<sup>4</sup> B To **B**



Eli Gerstner & Yossi Newman  
As Performed By The Y.B.C.

♩=165

**ROCK**

# Shehechiyonu

**INTRO**

B♭mi Ab Fmi B♭mi

G♭ Eb Fmi Ab 1. B♭mi 2. B♭mi

**FREILACH**

B♭mi B♭mi B♭mi G♭ Ebmi Ab

B♭mi B♭mi G♭ Ebmi Ab 1. G♭ Ab B♭mi 2. G♭ Ab B♭mi

**ROCK**

B♭mi B♭mi Ebmi Ab B♭mi

B♭mi G♭ Ebmi 1. Ab B♭mi 2. Ab B♭mi

**HALF-TIME**

Fmi7 B♭mi Ab/C Db

E♭mi B♭mi Ebmi B♭mi Ab 1. Fmi7 B♭mi 2. Fmi7 B♭mi

**Rock**

To **A**





# Maoz Tzur

Dovid Nachman & Eli Gerstner  
As Performed By Y.B.C.

**Ballad**

**(Intro)**

A D Esus<sup>4</sup>E A D E

A D Esus<sup>4</sup>E A D Esus<sup>4</sup>E

A E A E D Esus<sup>4</sup>E

**A** [Repeat Sign]

A E/G# F#mi E | 1. D Dmi A

2. D Dmi A

**B** A F#mi D E Bmi E A Esus<sup>4</sup> E/G#

A E/G# F#mi E D E A



Yossi Newman

As Performed By Y.B.C.

# Haneiros Halolu

♩=120

**ROCK**

(Intro) (N.C.)

**MIDDLE EASTERN**

**A**

Gmi Dmi<sup>7</sup> Gmi Dmi<sup>7</sup> Gmi C<sup>9</sup> E<sup>b</sup>7 Gmi<sup>7</sup>

Gmi Dmi<sup>7</sup> E<sup>b</sup>ma<sup>7</sup> Dmi<sup>7</sup> Gmi Cmi<sup>9</sup> E<sup>b</sup> F Gmi

**ROCK**

**B**

Gmi C/G Gmi C/G B<sup>b</sup>/G C/G B<sup>b</sup>/G C/G

Gmi C/G Gmi C/G B<sup>b</sup> C A<sup>b</sup>7 Gmi

